

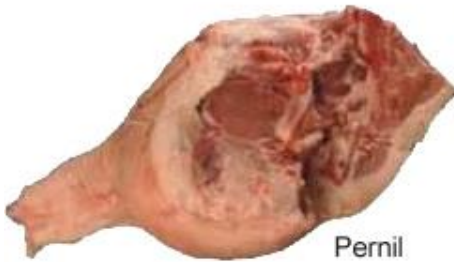
Alcatra



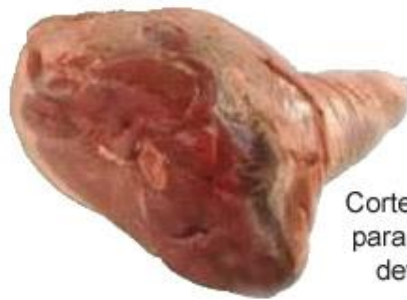
Bacon



Paleta com Osso



Pernil



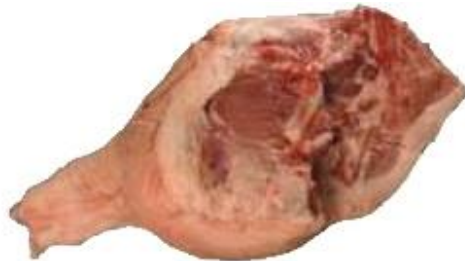
Corte de Pernil para presunto defumado



Cabeça



Costelinha



Paleta inteira



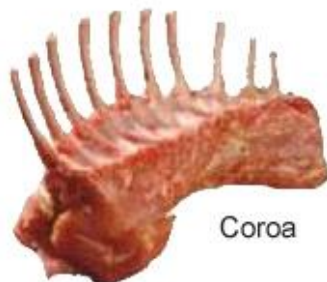
Costela



Orelha



Pé



Coroa



Paleta com ponta de peito



Papada



Picanha



Rabo



Coxão de Fora
(Duro)



Coxão de Dentro
(Mole)



Filé Mignon



Bisteca



Pele



Gordura